

# FOCUS

EXCLUSIVE OFFERS &amp; EXCITING NEW PRODUCTS

## GREAT NEW OFFERS INSIDE:

Gilson Pipetman® G  
Manual Pipettes  
(See page 14)

Motic Panthera E2  
Microscopes  
(See page 21)

See page 7...

**25%  
OFF**

### Eppendorf Mastercycler® nexus

Offers flexibility and connectivity,  
with intuitive software for ease  
of use/programming and a  
compact footprint



### Ecodyst Disruptive Evaporation Technology

Set new sustainable  
standards by improving energy  
efficiency and rates of evaporation



See page 50...

**NEW**

Brought to you by Ireland's totally independent  
supplier of scientific products

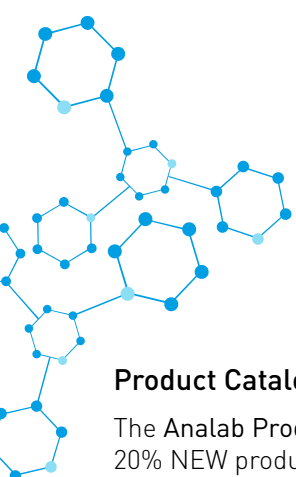
# WELCOME

## FOCUS Autumn 2021 Edition

Welcome to another fantastic issue of FOCUS! Packed with exclusive offers on laboratory products from market leading brands. We also have some exciting NEW products in this edition, including the revolutionary Ecodyst Hydrogen rotovaps and SLS Lab Pro liquid nitrogen and gas generators. Speak to your local account manager to find out how these products can change your lab life for the better!

In addition to this issue, visit our website for supplementary 'FOCUS Extra' online offers, for even more great savings on many other fantastic products.

**REMEMBER:**  
These offers are EXCLUSIVE to Analab and valid until 31<sup>st</sup> Dec 2021



### Product Catalogues

The Analab Product Catalogue (2020/21) features 20% NEW products and the Chemicals Catalogue includes products from leading brands including Honeywell Fluka™, Honeywell Riedel-de Haën, Hydranal™, Chromasolv™, Reagecon and SLS Select chemicals.

Whatever your application you're sure to find the product to suit your needs.

**KEY** to product symbols:



Length of warranty



Sustainability



Made in Britain



## KEY Highlights



Gilson Pipetman® G Manual Pipettes  
See page 14



Motic Panthera E2 Microscopes  
See page 21



Benchmark MC-24™ Touch High Speed Microcentrifuge with COMBI-Rotor™  
See page 28



Getinge Lancer ULTIMA 910LX Freestanding Labware Washer Dryer Package  
See page 43



Astell Swiftlock Autoclaves Front Loading  
See page 47



SLS Lab Pro NG1-1 Nitrogen Gas Generator  
See page 51

**HOMOGENIZE ALL YOUR SAMPLES**  
WITH THE BEST COMBINATION  
FOR EFFICIENT EXTRACTION



**20% OFF\***  
Offer Code F16586

### DISCOVER PRECELLYS & CRYOLYS EVOLUTION NOW!

- **Super fast:** up to 10 000 rpm
- **Super flexible:** 0.2 (96WP), 0.5, 2, 7 & 15mL tubes
- **Super efficient:** powerful 3D motion, manufactured for BSL3 use
- **Super protective:** available patented cooling unit

\*Offer valid from September 1 to December 15, 2021 for the purchase of a Precellys Evolution + Cryolys Evolution

**PRECELLYS®**  
THE SCIENCE OF LYSING

[www.analab.co.uk](http://www.analab.co.uk) / [www.analab.ie](http://www.analab.ie) (Product F16586)





## Eppendorf 5920 R Centrifuge

3 YEARS

eppendorf

Delivers extraordinary high capacity in a very compact and ergonomic product design. It has similar dimensions as competing refrigerated 3L models and yet features a superior capacity, making it the ideal instrument for high-throughput applications.

- Multi-lingual operating system, large backlit display, saves up to 99 user-defined programs
- FastTemp pro® function for automated pre-cooling
- Aerosol-tight QuickLock® caps and lids
- Centrifuge lid with soft-touch lid closure
- Quiet operation to improve your work environment
- Automatic rotor recognition and imbalance detection

Supplied with S-4xUniversal-Large rotor, universal buckets, adapters for 5/15/25/50mL conical tubes and plates. Capacity up to 40 x 50mL/96 x 15mL/ 8 x DWP.



23% OFF

Code	Max Speed, RPM	Max Speed, x g	Temp Range, °C	Offer Price, €	Offer Price, £
F16240	13700 (4250 with supplied rotor)	21194 (4402 with supplied rotor)	-11 to +40	10763.00	8969.00

## Eppendorf 5430 R Centrifuge Bundle

2 YEARS

eppendorf

Combine the best features of a microcentrifuge (small footprint) and multipurpose centrifuge (versatility) in one instrument. The 5430 R spins rotors for Eppendorf tubes, PCR strips and can also accommodate rotors for microplates and 15/50mL conical tubes.

- ECO shut-off engages after 8 hours of non-use
- Soft-touch one-finger lid closure for ergonomic operation
- Saves up to 50 user-defined programs
- Automatic rotor recognition and imbalance detection
- Eppendorf QuickLock® for quickly opening and closing the rotor lid
- FastTemp pro® function for programmable pre-cooling
- Keypad control

Supplied with FA-45-30-11 fixed angle rotor with aerosol tight aluminium lid for 30 x 1.5/2.0mL tubes and A-2-MTP swing out rotor with two MTP buckets and windshield.



10% OFF

Code	Max Speed, RPM	Max Speed, x g	Temp Range, °C	Offer Price, €	Offer Price, £
F16304	17500	30130	-11 to +40	7607.00	6339.00

## Eppendorf 5810 R Centrifuge Bundle

3 YEARS

eppendorf

Offers a cost effective solution for medium to high-throughput applications. Combining versatility and capacity for both tubes and plates with a compact footprint.

- Aerosol-tight Eppendorf QuickLock® caps and lids
- Quiet operation to improve your work environment
- Automatic rotor recognition and imbalance detection
- FastTemp function for fast pre-cooling
- Automatic ECO-shut off mode to reduce energy consumption
- Built in condensate drain eliminates water accumulation
- Dynamic compressor control (DCC) technology for optimised cooling performance

Supplied with A-4-81 swing out rotor with four 400mL rectangular buckets, a 48 x 15mL/20 x 50mL adapter and FREE FA-45-30-11 rotor for 30 x 1.5/2.0mL tubes with aerosol tight and QuickLock® lid.



FREE  
FA-45-30-11  
Rotor

Code	Max Speed, RPM	Max Speed, x g	Temp Range, °C	Offer Price, €	Offer Price, £
F16302	14000	20913	-9 to +40	11670.00	9725.00

## Eppendorf Innova® 44/44R Shaker Incubators

2 YEARS

eppendorf

Heavy duty triple eccentric drive providing uniform motion and superb reliability. All units have audible and visual alarms and a timer (0-99.9 hrs) with continuous operation or automatic shut off at the end of the study.

- Can be stacked up to 3 high
- Can accommodate maximum flask size 5L
- Operate at 25 - 400RPM
- Temperature range is from 5°C above ambient to 80°C
- Refrigerated version offers a temperature range of 20°C below ambient to 80°C (minimum set point is 4°C)
- Dimensions, w x d x h, mm: 1350 x 870 x 735

35% OFF  
+ FREE  
Universal  
Platform



Code	Description	Orbit, mm	Offer Price, €	Offer Price, £
F11528	Innova® 44	25	10834.00	9028.00
F11530	Innova® 44	51	10834.00	9028.00
F11532	Innova® 44R (refrigerated)	25	13328.00	11107.00
F11534	Innova® 44R (refrigerated)	51	13328.00	11107.00

# Eppendorf Innova® S44i Biological Refrigerated Shaker Bundle

2 YEARS

eppendorf

Large capacity, stackable shaker with temperature control functionality. Designed to provide maximum flask and weight capacity in a compact footprint. Features easy-to-use touchscreen user interface, USB ports to download operational data and Ethernet for addition to customer network.

- X-Drive with semi-automatic counterbalance technology
- High temperature uniformity across chamber
- Easily reach all your samples using the slide-out platform
- Optimise your space with double and triple-stacked configurations
- Create multi-step programs for automated control

Supplied with 1 x universal platform, 1 x microplate holder, 3 x clamps for 125mL/250mL/500mL/1L Erlenmeyer flasks.



25% OFF

Code	Orbit, mm	Temp Range, °C	Offer Price, €	Offer Price, £
F16298	25	20 below ambient to 80 (min 4)	19620.00	16350.00

# New Brunswick™ S41i CO<sub>2</sub> Incubator Shaker Bundle

2 YEARS

eppendorf

The S41i incubator shaker with its six-sided direct-heating profile provides gentle convection circulation of the chamber atmosphere. Combined with precise CO<sub>2</sub> control and built-in technology the S41i offers a highly stable environment for reliable non-adherent cell growth.

- Perforated shelf allows for static incubation at the same time as shaking
- Stable, uniform and vibration-free shaking
- Automatic high temperature disinfection and inner/outer door
- Precise and easy controls with intuitive touch screen
- Humidification included
- Two devices stackable gives increased capacity
- Shaking speed 25 - 400RPM (25 - 300RPM if stacked)

Supplied with 1 x universal platform and 2 x sticky pads.



25% OFF

Code	Capacity, L	Orbit, mm	Temp Range, °C	CO <sub>2</sub> Range, %	Offer Price, €	Offer Price, £
F16300	170	25	4 to 50	0.1 to 20	12312.00	10260.00

# Eppendorf Mastercycler® nexus

2 YEARS

eppendorf

The Eppendorf Mastercycler® nexus family offers flexibility and connectivity. With intuitive software for ease of programming and a compact footprint, up to 3 Nexus thermal cyclers can be connected and centrally controlled. Available with a silver block option for fast heating (5°C/sec), universal block option for flexibility or flat block option which allows for the use specialist consumables such as slides without an adaptor. The flexlid® concept incorporates automatic height adjustment of the lid allowing for the use of all types of consumables. All blocks feature SteadySlope® technology meaning the heating and cooling ramp rates are identical in both gradient and normal operation.

- Protocols can be stored in an individual password protected folder
- Intuitive graphic programming interface

25% OFF



Code	Description	Block Material	Sample Capacity, mL	Heating rate °C/sec	Cooling rate °C/sec	Gradient Range, °C	Offer Price, €	Offer Price, £
E6333000049	nexus	Aluminium	96 x 0.2 or 71 x 0.5	3	2	—	5272.00	4393.00
E6331000041	nexus gradient	Aluminium	96 x 0.2 or 71 x 0.5	3	2	1 - 20	6310.00	5258.00
E6332000045	nexus eco	Aluminium	96 x 0.2 or 71 x 0.5	3	2	—	4069.00	3391.00
E6334000042	nexus gradient eco	Aluminium	96 x 0.2 or 71 x 0.5	3	2	1 - 20	5132.00	4277.00
E6335000046	nexus flat	Flat aluminium	4 x slides or equivalent	3	2	—	5864.00	4887.00
E6330000048	nexus flat eco	Flat aluminium	4 x slides or equivalent	3	2	—	4561.00	3801.00
E6346000048	nexus SX1	Silver	96 x 0.2	5	3.5	—	6244.00	5203.00
E6348000045	nexus SX1 eco	Silver	96 x 0.2	5	3.5	—	4876.00	4063.00
E6345000044	nexus GSX1	Silver	96 x 0.2	5	3.5	1 - 20	7270.00	6058.00
E6347000041	nexus GSX1 eco	Silver	96 x 0.2	5	3.5	1 - 20	5902.00	4918.00



# Eppendorf Electronic Multipipette® E3 and E3x Dispensers

Functions according to the positive displacement principle. The motor driven dispenser gives full volume control, improved accuracy and reproducibility while reducing physical strain during use. The repetitive dispensing modes contribute to reducing fatigue by decreasing the number of movements for the user; filling the tip once allows dispensing up to 100 times. Accommodates more than 5000 different dispensing volumes between 1µL to 50mL. E3x versions include additional aspirate, titrate and sequential dispense functions.

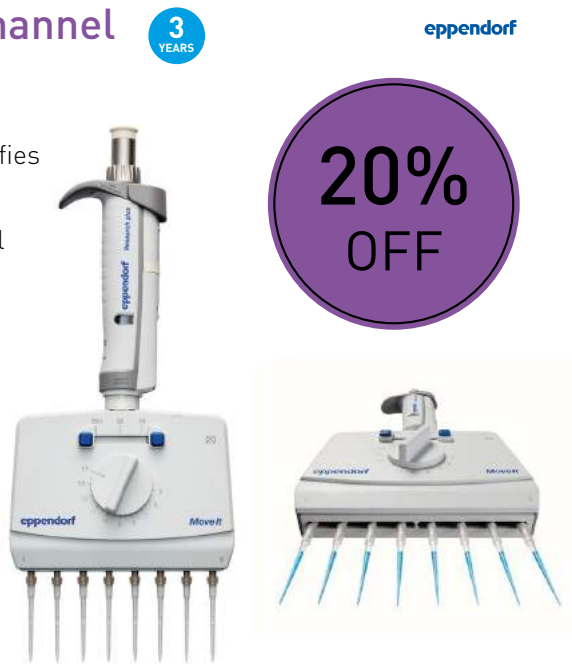


Code	Description	Offer Price, €	Offer Price, £
E4987000010	Multipette® E3, with charging adapter and Combitips advanced® assortment pack	500.00	417.00
E4987000029	Multipette® E3x, with charging adapter and Combitips advanced® assortment pack	640.00	533.00
E4987000371	Multipette® E3, with charging adapter, Combitips advanced® assorted pack and charger stand	565.00	471.00
E4987000380	Multipette® E3x, with charging adapter, Combitips advanced® assorted pack and charger stand	689.00	574.00

# Eppendorf Research Plus Move It® Multi-Channel Pipettes with Adjustable Tip Spacing

The new adjustable tip spacing pipette Move It® accelerates and simplifies synchronous pipetting of a series of samples. A unique design without tubing connections results in increased precision and durability as well as user and sample safety.

- Efficient sample transfers from one vessel type to another.
- Pre-defined settings allow for quick switches back and forth between different formats
- Time-saving thanks to rotatable pipette head – 360°
- Tubeless system for reliability and reproducible results- no cable tangle and tubing-porosity, for consistently reliable robustness and precision



Code	Channel	Volume Range, µL	Tip Spacing Range, mm	Colour Code	Offer Price, €	Offer Price, £
E3125000150	4	15 - 300	9 - 33	Orange	1103.00	919.00
E3125000184	4	120 - 1200	9 - 33	Dark green	1103.00	919.00
E3125000168	6	15 - 300	9 - 20	Orange	1147.00	956.00
E3125000192	6	120 - 1200	9 - 20	Dark green	1147.00	956.00
E3125000176	8	15 - 300	9 - 14	Orange	1195.00	996.00
E3125000206	8	120 - 1200	9 - 14	Dark green	1195.00	996.00

# Eppendorf VisioNize® Pipette Manager

- Manage your pipette fleet more effectively and enhance collaboration in teams. Integrated features like »Pipette Set Creation« or »Liquid Type Sharing« support smooth and efficient operations
- Easily convert your conventional Eppendorf Xplorer® and Eppendorf Xplorer® plus electronic pipettes into a connected electronic pipette with the WiFi module
- Quicker input of volumes via the VisioNize pipette manager. All settings will be transferred to connected electronic pipettes for an immediate start of pipetting
- Get guidance by the software-embedded Liquid Manager when working with liquids of different viscosity, volatility, or surface tension, or foam-building liquids

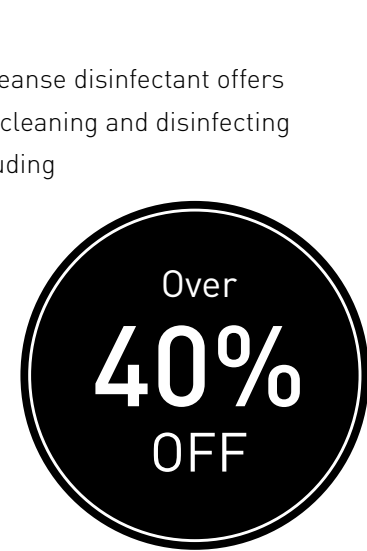


Code	Description	List Price, €	List Price, £
E1004000001	VisioNize® pipette manager	1018.00	783.00
E4861000970	Xplorer Connect® WiFi module inc. battery	85.00	65.30

# SLS Select Biocleanse Disinfectant

Low-residue, alcohol-free SLS Select Biocleanse disinfectant offers a convenient, effective, powerful all-in-one cleaning and disinfecting solution for a broad range of surfaces, including PMMA and aluminium.

- Wide spectrum microbicide
- pH neutral
- Alcohol-free
- Effective against all enveloped viruses e.g. HIV, HBV, HCV, coronaviruses
- Wipe size: 200 x 190mm
- 200 wipes per tub or refill pouch



Code	Description	Pack	Offer Price, €	Offer Price, £
F151360	Disinfectant wipe tub	6	42.00	35.35
F151361	Disinfectant wipes refill pouch	10	68.00	56.80
F151362	Disinfectant trigger spray bottle 500mL	20	99.00	82.60

## SLS Lab Pro Pipettes

3 YEARS



The SLS Lab Pro pipettes offer superior quality at an affordable price. These are lightweight pipettes with a handle that fits naturally in the hand. They feature a volume locking system for safe, secure pipetting. A lubricated piston assembly offers very light pipetting forces.

- Adjustable tip ejector button to adapt to both right and left-handed users
- Clip mechanism allows easy and safe removal of tip ejector
- Fully autoclavable



50% OFF

Code	Channel	Volume Range, µL	Offer Price, €	Offer Price, £
F151284	Single	0.2 - 2	126.00	105.00
F151285	Single	1 - 10	126.00	105.00
F151286	Single	2 - 20	126.00	105.00
F151287	Single	10 - 100	126.00	105.00
F151288	Single	20 - 200	126.00	105.00
F151289	Single	100 - 1000	126.00	105.00
F151290	Single	500 - 5000	144.00	120.00
F151291	Single	1000 - 10000	144.00	120.00
F151292	8	0.5 - 10	282.00	235.00
F151293	8	2 - 20	282.00	235.00
F151294	8	20 - 200	282.00	235.00
F151295	8	20 - 300	282.00	235.00
F151296	12	0.5 - 10	342.00	285.00
F151297	12	2 - 20	342.00	285.00
F151298	12	20 - 200	342.00	285.00
F151299	12	20 - 300	342.00	285.00



### Corning® Stripettor™ Ultra Pipette Controller

Code	Offer Price, €	Offer Price, £
F151058	168.00	140.00

49% OFF



### Corning® Cell Culture Grade Water

Cell culture grade water tested to USP specifications. Sterile water for injection. Supplied in packs of 6

Code	Volume, mL	Offer Price, €	Offer Price, £
F16142	100	30.00	25.00
F16144	500	27.00	22.50
F16148	1000	41.00	34.30

Up to 53% OFF

## SLS Lab Basics Pipettes

3 YEARS



### Single Channel:

- Ergonomic design ensuring light weight & soft plunger movement
- Click-stop system for volume selection
- Colour coded for easy identification
- Calibration conforms to EN-ISO 8655 with report enclosed with every pipette

### Multi Channel:

- Smooth and light tip loading and ejection
- Leak free sealing of tips
- Manifold is easily removable, fully autoclavable and can rotate 360° for easy right or left hand operation



Up to 68% OFF

Code	Channel	Volume Range, µL	Offer Price, €	Offer Price, £
F151300	Single	0.1 - 2.5	55.00	46.00
F151301	Single	0.5 - 10	55.00	46.00
F151305	Single	2 - 20	55.00	46.00
F151302	Single	5 - 50	55.00	46.00
F151303	Single	10 - 100	55.00	46.00
F151306	Single	20 - 200	55.00	46.00
F151304	Single	100 - 1000	55.00	46.00
F151307	Single	500 - 5000	62.00	52.00
F151308	Single	1000 - 10000	62.00	52.00
F151313	8	0.5 - 10	192.00	160.00
F151309	8	5 - 50	192.00	160.00
F151310	8	10 - 100	192.00	160.00
F151311	8	20 - 200	192.00	160.00
F151312	8	30 - 300	192.00	160.00

Corning® Lambda™ Plus  
Pipette Starter Kit

Engineered to provide the highest levels of accuracy, reproducibility, and comfort. Features smooth plunger movement and extremely low pipetting forces. A locking mechanism prevents accidental change to the volume setting. Designed to maintain their calibration, even after repeated use and autoclaving. A key is included with each pipette for easy in-house calibration.

- Factory calibrated to strict ISO 8655 standards
- Fully autoclavable and UV resistant
- Designed for universal fit with all common brands of pipette tips
- Adjustable tip ejector

**Includes: 4 x single-channel pipettes (0.5 to 10µL, 2 to 20µL, 20 to 200µL, 100 to 1000µL), universal carousel rack for 6 single channel pipettes, 3 x Corning DeckWorks™ pipette tips (10µL, 200µL, 1000µL).**



Code	Offer Price, €	Offer Price, £
F13018	442.00	368.00



Corning® Storage Bottles

PET octagonal storage bottles with HDPE screw cap. Sterile.

Code	Volume, mL	Pack	Offer Price, €	Offer Price, £
F16162	125	48	161.00	134.00
F16158	250	48	200.00	167.00
F16160	500	24	154.00	128.00
F16164	1000	24	198.00	165.00



Corning® Sterile  
Molecular Biology  
Grade Water

Code	Pack	Offer Price, €	Offer Price, £
F151056	6 x 500mL	49.00	40.60

Corning® Lambda™ EliteTouch™  
Starter Pack

Engineered to provide the highest level of ergonomics, accuracy, and precision. Features smooth plunger movement and extremely low pipetting forces to reduce wrist strain and fatigue (RSI). Coloured pushbuttons (included) can help define user or application for sample safety and lower risk of cross contamination.

- Ergonomic handle design for perfect fit for both right and left hand
- Convenient one-hand volume setting with auto-lock system
- 4-digit counter for greater precision, perfectly positioned for visibility at all times
- Fully autoclavable and UV resistant
- Easy in-lab calibration helps you quickly adjust your pipettor to various liquid types
- Individually tested and supplied with a certificate of quality

**Includes: 4 x single channel pipettes (0.5 to 10µL, 2 to 20µL, 20 to 200µL, 100 to 1000µL), universal linear stand for 4 single channel pipettes, 3 x Corning® DeckWorks pipette tips (10µL, 200µL, 1000µL), 4 x 3 x coloured pushbuttons.**



Code	Offer Price, €	Offer Price, £
F16130	498.00	415.00



Gilson Pipetman® G Manual Pipettes

3 YEARS

Offering one of the lowest pipetting forces commercially available with a redesigned piston assembly system and high quality piston grease for comfortable pipetting. It relies on the legendary accuracy, precision, and reliability of PIPETMAN®, with improved pipetting comfort. Made of PVDF and stainless steel for premium durability. The new clip ejector allows for convenient access to serviceable parts.



Code	Channel	Volume Range, µL	Offer Price, €	Offer Price, £
F13224	Single	0.2 - 2	155.00	129.00
F13228	Single	0.5 - 10	155.00	129.00
F13226	Single	2 - 20	155.00	129.00
F13236	Single	10 - 100	155.00	129.00
F13232	Single	20 - 200	155.00	129.00
F13234	Single	100 - 1000	155.00	129.00
F13230	Single	500 - 5000	155.00	129.00
F13238	Single	1000 - 10000	155.00	129.00
F16004	8	1 - 10	409.00	341.00
F16006	8	2 - 20	409.00	341.00
F16008	8	20 - 200	409.00	341.00
F16010	8	30 - 300	409.00	341.00
F16012	12	1 - 10	478.00	398.00
F16014	12	2 - 20	478.00	398.00
F16016	12	20 - 200	478.00	398.00
F16018	12	30 - 300	478.00	398.00



3-Layer Face Mask

High density filter layer, elastic nylon ear loops and fully enclosed adjustable nose clip. Bacterial filtration efficiency (BFE): ≥98%.

Supplied in packs of 50

Code	Offer Price, €	Offer Price, £
COV1000R	34.00	28.60

40% OFF



National Diagnostics Histology Clearing Agent 1 US Gallon

Code	Description	Offer Price, €	Offer Price, £
F13532	Histo-Clear	90.00	75.30
F13534	Histo-Clear II	60.00	50.20

Over 40% OFF

BRAND Transferpette® Electronic Pipettes

Transferpette® electronic pipettes combine the globally proven properties of mechanical piston operated air displacement pipettes by BRAND with the advantages of an electronic device.

- The pipette shaft can be unscrewed and is entirely autoclavable (121°C)
- Five convenient programs: pipetting, reverse pipetting, mixing, GEL-Electrophoresis and dispensing.
- Easy Calibration™ technology for making quick adjustments of the Transferpette® electronic without tools
- CE-marked according to IVD-Directive 98/79 EG

Code	Channel	Volume Range, µL	Offer Price, €	Offer Price, £
F16444	Single	0.5 - 10	283.00	236.00
F16446	Single	2 - 20	283.00	236.00
F16448	Single	20 - 200	283.00	236.00
F16450	Single	50 - 1000	283.00	236.00
F16452	Single	250 - 5000	283.00	236.00
F16456	8	0.5 - 10	570.00	475.00
F16458	8	1 - 20	570.00	475.00
F16460	8	5 - 100	570.00	475.00
F16462	8	10 - 200	570.00	475.00
F16464	8	15 - 300	570.00	475.00
F16466	12	0.5 - 10	659.00	549.00
F16468	12	1 - 20	659.00	549.00
F16470	12	5 - 100	659.00	549.00
F16472	12	10 - 200	659.00	549.00
F16474	12	15 - 300	659.00	549.00

35% OFF





Axygen® Liquid Level Sensing Tips for Hamilton Star Automation Systems

Available in nonsterile, sterile, non-filtered and filtered. Conductive black polypropylene tips in 96 well hanging tip rack format. Designed for Hamilton® Microlab® STAR, STARlet, STARplus and Nimbus® workstations.

- RNase-/DNase-free
- Nonpyrogenic

Over  
45%  
OFF



Code	Volume, µL	Description	Sterility	Pack	Offer Price, €	Offer Price, £
F16166	300	Non-filtered	Non-sterile	2304	142.00	118.00
F16168	300	Non-filtered	Non-sterile	5760	352.00	293.00
F16170	300	Non-filtered	Sterile	2304	154.00	128.00
F16172	300	Non-filtered	Sterile	5760	385.00	321.00
F16174	300	Filtered	Sterile	2304	181.00	151.00
F16176	300	Filtered	Sterile	5760	454.00	378.00
F16178	1000	Non-filtered	Sterile	1536	103.00	86.00
F16180	1000	Filtered	Sterile	1536	121.00	101.00
F16182	1000	Non-filtered	Non-sterile	3840	234.00	195.00
F16188	1000	Non-filtered	Sterile	3840	257.00	214.00
F16190	1000	Filtered	Sterile	3840	302.00	252.00

SLS Lab Pro Safevac Aspiration System

Designed for laboratory waste recovery and separation of liquid and solid. Can be widely used in cell culture, DNA extraction, microplate waste removal, and any other liquid separation or recovery.

- Sensitive level sensor to prevent liquid overflow during operation
- Waste bottle, tubing and handle are fully autoclavable
- Lid, tubing and handle are easy for disassembling, cleaning and autoclaving
- Wide range of adapters to fit tubes and microplates

45%  
OFF



Code	Vacuum Range, mbar	Vacuum Speed, mL/S	Volume, L	Dims, w x d x h, mm	Offer Price, €	Offer Price, £
F151283	0 - 600	1 - 15	4	180 x 240 x 450	780.00	650.00

OHAUS Adventurer® Precision Balances

2  
YEARS



OHAUS Adventurer incorporates all of the applications necessary for routine weighing and measurement activities. With a wide viewing angle colour touchscreen, GLP/GMP compliance capabilities, and two USB ports.

- Available with or without Ohaus's AutoCal™ automatic calibration system
- 1mg models have a two piece, top-mounted draftshield with doors that open wide, providing ample room for sample placement
- 0.01g and 0.1g models feature large weighing pans

35%  
OFF



Code	Model	Capacity, g	Readability, g	Certified Readability	Calibration	Pan Dims, mm	Offer Price, €	Offer Price, £
F16046	AX223	220	0.001	—	Internal	Ø 130	1178.00	982.00
F16048	AX223/E	220	0.001	—	External	Ø 130	971.00	809.00
F16050	AX223M	220	0.001	10mg	Internal	Ø 130	1342.00	1118.00
F16052	AX423	420	0.001	—	Internal	Ø 130	1298.00	1082.00
F16054	AX423/E	420	0.001	—	External	Ø 130	1092.00	910.00
F16056	AX423M	420	0.001	10mg	Internal	Ø 130	1463.00	1219.00
F16058	AX523	520	0.001	—	Internal	Ø 130	1544.00	1287.00
F16060	AX523/E	520	0.001	—	External	Ø 130	1342.00	1118.00
F16062	AX523M	520	0.001	10mg	Internal	Ø 130	1716.00	1430.00
F16064	AX422	420	0.01	—	Internal	175 x 195	948.00	790.00
F16066	AX422/E	420	0.01	—	External	175 x 195	742.00	618.00
F16068	AX822	820	0.01	—	Internal	175 x 195	1054.00	878.00
F16070	AX822/E	820	0.01	—	External	175 x 195	851.00	709.00
F16072	AX1502	1520	0.01	—	Internal	175 x 195	1163.00	969.00
F16074	AX1502/E	1520	0.01	—	External	175 x 195	955.00	796.00
F16076	AX1502M	1520	0.01	100mg	Internal	175 x 195	1326.00	1105.00
F16078	AX2202	2200	0.01	—	Internal	175 x 195	1186.00	988.00
F16080	AX2202/E	2200	0.01	—	External	175 x 195	979.00	816.00
F16082	AX2202M	2200	0.01	100mg	Internal	175 x 195	1350.00	1125.00
F16084	AX4202	4200	0.01	—	Internal	175 x 195	1288.00	1073.00
F16086	AX4202/E	4200	0.01	—	External	175 x 195	1076.00	897.00
F16088	AX4202M	4200	0.01	100mg	Internal	175 x 195	1451.00	1209.00
F16090	AX5202	5200	0.01	—	Internal	175 x 195	1544.00	1287.00
F16092	AX5202M	5200	0.01	100mg	Internal	175 x 195	1709.00	1424.00
F16094	AX2201	2200	0.1	—	Internal	175 x 195	908.00	757.00
F16096	AX2201/E	2200	0.1	—	External	175 x 195	706.00	588.00
F16098	AX4201	4220	0.1	—	Internal	175 x 195	1049.00	874.00
F16100	AX4201/E	4220	0.1	—	External	175 x 195	846.00	705.00
F16102	AX8201	8200	0.1	—	Internal	175 x 195	1147.00	956.00
F16106	AX8201/E	8200	0.1	—	External	175 x 195	940.00	783.00
F16108	AX8201M	8200	0.1	100mg	Internal	175 x 195	1310.00	1092.00

# SLS Lab Pro SK-i Series Precision Balances

5 YEARS



- Single range, high resolution 1/6,000 to 1/30,000
- LCD display with backlight
- RS-232C as standard
- Auto-power off function
- HI/OK/LO comparator indication
- Counting and percentage mode
- Multi-unit: g, pieces, %, ounce, lb, oz, ct, mom, dwt, GN
- Optional Ni-MH rechargeable battery (metal hydrate)
- WinCT as standard
- ACAI counting function
- Dims, w x d x h, mm 190 x 218 x 551

Over  
**40% OFF**



Code	Capacity, g	Readability, g	Pan Dims, mm	Offer Price, €	Offer Price, £
F16396	200	0.01	Ø 110	192.00	160.00
F16398	300	0.01	Ø 110	210.00	175.00
F16400	400	0.01	Ø 110	268.00	223.00
F16402	600	0.01	Ø 110	324.00	270.00
F16404	1200	0.1	133 x 170	173.00	144.00
F16406	2000	0.1	133 x 170	190.00	158.00
F16408	3000	0.1	133 x 170	220.00	183.00
F16410	4000	0.1	133 x 170	268.00	223.00
F16412	6000	0.1	133 x 170	334.00	278.00
F16414	6000	1.0	133 x 170	180.00	150.00
F16416	12000	1.0	133 x 170	244.00	203.00



## SLS Select Sanitiser Blast Room Foggers

>90% alcohol. Leaves an anti-bacterial layer on all surfaces and sanitises the air. Effective against 99.9% of bacteria, yeast & enveloped viruses including coronavirus.

Code	Pack	Offer Price, €	Offer Price, £
COV1219	100mL	5.00	3.85

**45% OFF**



## Duran Glass Bottles

Code	Description	Volume, mL	Offer Price, €	Offer Price, £
F16252	Hydra purging bottle GL 45 HPLC square clear with 4 GL 45 side necks	1000	203.00	169.00
F16254	Storage bottle GL 45 HPLC with GL 45 side neck	2000	57.00	47.50

**NEW**

## OHAUS Adventurer® Analytical Balances

2 YEARS



OHAUS Adventurer® incorporates all of the applications necessary for routine weighing and measurement activities. With a wide viewing angle colour touchscreen, GLP/GMP compliance capabilities, two USB ports, and much more, Adventurer is the most complete balance in its class.

- Fast stabilisation and reliable operation
- AutoCal™ option to ensure solid weighing performance and accurate, repeatable results
- Two piece, top-mounted draftshield with doors that open wide, providing ample room for sample placement
- Dims, w x d x h: 354 x 230 x 340mm
- Pan Ø: 90mm



**35% OFF**

Code	Model	Capacity, g	Readability, mg	Certified Readability	Calibration	Offer Price, €	Offer Price, £
F16030	AX124	120	0.1	—	Internal	1669.00	1391.00
F16032	AX124/E	120	0.1	—	External	1475.00	1229.00
F16034	AX124M	120	0.1	1mg	Internal	1841.00	1534.00
F16036	AX224	220	0.1	—	Internal	1756.00	1463.00
F16038	AX224/E	220	0.1	—	External	1556.00	1297.00
F16040	AX224M	220	0.1	1mg	Internal	1922.00	1602.00
F16042	AX324	320	0.1	—	Internal	1771.00	1476.00
F16044	AX324M	320	0.1	1mg	Internal	1938.00	1615.00



SLS Lab Pro SM Series Micro Analytical Balances

5 YEARS



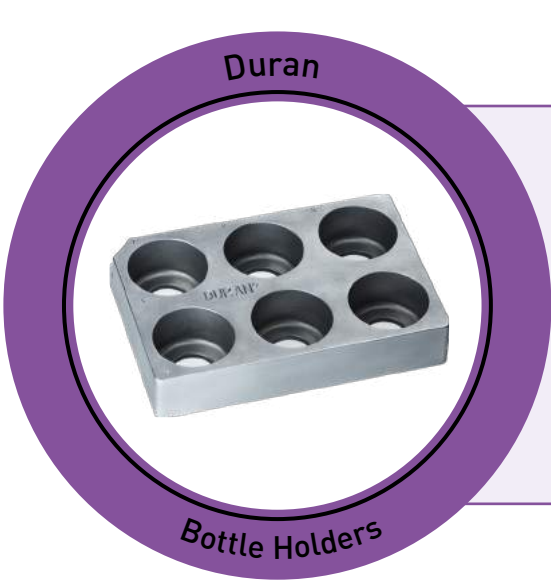
The SLS Lab Pro SM Series of balances have been developed for high end micro weighing with the automatic elimination of static electricity at a competitive price. A built in fanless ioniser eliminates static and a large weighing chamber with interlockable slide doors allows operation with either hand.

- One touch automatic calibration
- Internal data memory function for up to 200 sets of data
- GLP/GMP/GCP/ISO compliant output
- Built-in temperature, humidity, and atmospheric pressure sensors
- RS-232C and Quick USB interfaces as standard
- AD-1688 weighing data logger as standard

Up to  
**49% OFF**



Code	Capacity, g	Readability, mg	Pan Dims, mm	Offer Price, €	Offer Price, £
F14386	22	0.001	25	6077.00	5064.00
F14388	5.1/22	0.001/0.01	25	5436.00	4530.00
F14390	250	0.01	90	3404.00	2837.00
F14392	220	0.1	90	2400.00	2000.00
F14394	320	0.1	90	2064.00	1720.00
F14396	520	0.1	90	2240.00	1867.00



Duran ANSI/SLAS Microplate Footprint Bottle Holders Aluminium

**NEW**

Code	Capacity	Offer Price, €	Offer Price, £
F16258	6 x 10mL GL 25 bottles	162.00	135.00
F16260	6 x 25mL GL 25 bottles	162.00	135.00

Motic Panthera E2 Microscopes



Features a reversed 4-fold nosepiece and rackless X/Y-stage. Equipped with Ultra Contrast (UC) plan achromatic objectives in a range from 4X to 100X magnification.

- Colour Corrected Infinity Optical System (CCIS®)
- Observation system Siedentopf type 25° inclined, 360° swivelling
- Widefield eyepieces with field of view 20mm
- Eyepiece diopter adjustment ±5dpt
- Condenser N.A. 0.90 / 1.25 Abbe condenser with slider slot
- Objectives 4X/0.1 (WD 30.5mm), 10X/0.25 (WD 17.4mm), 40X/0.65/S (WD 0.6mm), 100X/1.25/S-Oil (WD 0.16mm)
- LED 1W illumination with intensity control, fixed Koehler
- USB connectivity for external camera power & USB for battery pack

**30% OFF**



Code	Description	Offer Price, €	Offer Price, £
F16022	Panthera E2 binocular	952.00	793.00
F16024	Panthera E2 trinocular	1069.00	891.00

Motic Panthera C2 Microscopes



Features a reversed 5-fold coded nosepiece and compact rackless mechanical stage. Motic LightTracer, the smart illumination system works with the coded nosepiece to memorise the illumination for each objective position. Equipped with Ultra Contrast (UC) plan achromatic objectives in a range from 4X to 100X magnification. Interchangeable light sources provide flexibility in illumination.

- Colour Corrected Infinity Optical System (CCIS®)
- Observation system Siedentopf type 25° inclined, 360° swivelling
- Widefield eyepieces with field of view 22mm
- Eyepiece diopter adjustment ±5dpt
- Condenser N.A. 0.90 / 1.25 Abbe condenser with slider slot
- Objectives 4X/0.1 (WD 30.5mm), 10X/0.25 (WD 17.4mm), 40X/0.65/S (WD 0.6mm), 100X/1.25/S-Oil (WD 0.16mm)
- Illumination LED 3W / Halogen 30W, Koehler setup
- USB connectivity for external camera power

**30% OFF**



Code	Description	Offer Price, €	Offer Price, £
F16026	Panthera C2 binocular	1226.00	1022.00
F16028	Panthera C2 trinocular	1386.00	1155.00



Chromatography



SLS are partnered with some of the most respected brands to provide a full workflow solution for all your chromatography requirements.

Kinesis Chromatography Vials and Caps

Supplied in packs of 1000



Code	Description	Offer Price, €	Offer Price, £
F16310	2mL short thread vial 32 x 11.6mm clear glass wide opening label	120.00	100.00
F16312	2mL short thread vial 32 x 11.6mm amber glass wide opening label	120.00	100.00
F16314	0.1mL insert wide opening vial 29 x 6mm bottom spring	540.00	450.00
F16318	0.9mL short thread vial 9mm 12 x 32mm total recovery	1680.00	1400.00
F16320	20mL headspace-vial 75.5 x 23mm clear glass rounded bottom	240.00	200.00
F16322	20mL headspace-vial 75.5 x 22.5mm clear glass crimp neck rounded bottom	240.00	200.00
F16324	20mL headspace-vial 75.5 x 22.5mm clear glass crimp neck flat bottom	240.00	200.00
F16326	9mm PP short thread cap blue with centre hole red rubber / PTFE beige	180.00	150.00
F16328	9mm PP short thread cap blue centre hole silicone white / PTFE red	180.00	150.00
F16330	9mm combination seal PP short thread cap blue centre hole silicone white / PTFE blue	360.00	300.00
F16332	20mm combination seal aluminium crimp cap plain centre hole silicone white / PTFE beige	540.00	450.00
F16334	20mm crimp cap headspace silicone white / PTFE beige pressure release	540.00	450.00
F16336	20mm aluminium crimp cap plain centre hole silicone transparent blue / PTFE white	540.00	450.00
F16338	20mm aluminium headspace crimp cap clear UltraClean closure	540.00	450.00

Kinesis Syringe Filters (Luer Lock)

Supplied in packs of 100



Code	Membrane	Membrane Ø, mm	Pore Size, µm	Offer Price, €	Offer Price, £
F16340	Nylon	13	22	54.00	45.00
F16342	Nylon	13	45	54.00	45.00
F16344	Nylon	25	22	54.00	45.00
F16346	Nylon	25	45	54.00	45.00
F16348	PES	13	22	54.00	45.00
F16350	PES	13	45	54.00	45.00
F16352	PES	25	22	54.00	45.00
F16354	PES	25	45	54.00	45.00
F16356	PVDF	13	22	54.00	45.00
F16358	PVDF	13	45	54.00	45.00
F16360	PVDF	25	22	54.00	45.00
F16362	PVDF	25	45	54.00	45.00
F16364	PTFE	13	22	54.00	45.00
F16366	PTFE	13	45	54.00	45.00
F16368	PTFE	25	22	54.00	45.00
F16370	PTFE	25	45	54.00	45.00
F16372	Hydrophilic PTFE	13	22	72.00	60.00
F16374	Hydrophilic PTFE	13	45	72.00	60.00
F16376	Hydrophilic PTFE	25	22	78.00	65.00
F16378	Hydrophilic PTFE	25	45	78.00	65.00

View the rest of our chromatography range online at: [www.analab.co.uk](http://www.analab.co.uk) or [www.analab.ie](http://www.analab.ie)



Bringing you the established brands across the protein research workflow

Sera-Mag™ nucleic acid sample and library preparation

HyClone™ cell culture media and sera

Whatman™ laboratory filtration products

ÄKTA™ chromatography columns, resins, and systems

Amersham™ systems, membranes, films, and reagents

Cytiva is a global provider of technologies and services that advance and accelerate the development and manufacture of therapeutics. We have a rich heritage tracing back hundreds of years, and a fresh beginning since 2020.

[www.analab.co.uk](http://www.analab.co.uk) / [www.analab.ie](http://www.analab.ie) - Search Cytiva

Cytiva and the Drop logo are trademarks of Life Sciences IP Holdings Corporation or an affiliate. ÄKTA, Amersham, HyClone, Sera-Mag, and Whatman are trademarks of Global Life Sciences Solutions USA LLC or an affiliate. © 2021 Cytiva For local office contact information, visit [cytiva.com/contact](http://cytiva.com/contact) CY21794-15Jul21-AD

SLS Lab Basics Mini Magnetic Stirrer

5 YEARS



Ideal for routine stirring applications.

- Quiet operation with low vibration, noise level (full speed, unloaded): 53dB
- Low-profile design with a small footprint
- Made from an ABS and PC blend that is chemical resistant and easy to clean
- Supplied with 2 stir bars (9 x 35mm) and universal power adapter

45% OFF



Code	Capacity, L	Speed Range, RPM	Dims, w x d x h, mm	Weight, kg	Offer Price, €	Offer Price, £
F14980	3	200 - 2200	132 x 183 x 47	0.447	84.00	70.00

SLS Lab Basics Mini Vortex Mixer

5 YEARS



A simple, touch start operation enables exceptional mixing performance with one handed operation, and shaking stops when the tube is lifted.

- Non-slip feet ensure the unit stays in place
- Made from durable ABS and silicone materials to resist most commonly used chemicals
- Quiet operation with low vibration, noise level (full speed, unloaded): 53dB
- Can be used with tubes ranging from 2 to 50mL
- Supplied with replacement silicone cap and universal power adapter

45% OFF



Code	Speed, RPM	Dims, w x d x h, mm	Weight, kg	Offer Price, €	Offer Price, £
F14982	4500 (fixed)	110 x 130 x 75	0.9	92.00	77.00

OHAUS Multi-Tube Vortexers

2 YEARS



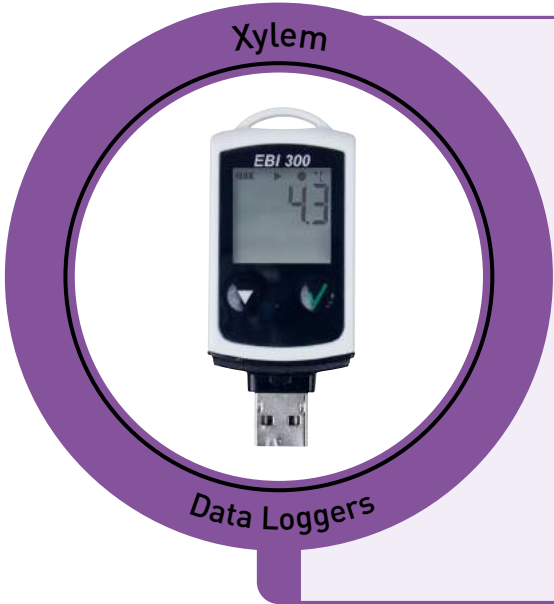
OHAUS Multi-Tube Vortexers are ideal for hands-free, high-throughput sample processing. Interchangeable foam racks for vortexing tubes from 10 to 29mm Ø are available. Strong suction cup feet reduce motion and prevent sliding on the work surface. The digital model offers exact speed control for applications that demand repeatable results.

- Easily process up to 50 samples at one time - can be customized for your application with six different tube racks
- For challenging samples, enhance vortex action and create a more vigorous mix with the programmable pulse mode on the digital model
- Supplied with detachable 3-wire cord and plug (included), foam rack for 50 x 12mm diameter tubes

35% OFF



Code	Description	Speed Range, RPM	Offer Price, €	Offer Price, £
F16110	VXMTAL analogue vortexer stainless steel housing	1200 - 2400	2333.00	1944.00
F16112	VXMTDG digital vortexer stainless steel housing	500 - 2500	3035.00	2529.00
F16114	VXMTALB analogue vortexer painted steel housing	1200 - 2400	1740.00	1450.00
F16116	VXMTDGB digital vortexer painted steel housing	500 - 2500	2262.00	1885.00



Xylem Ebro EBI 300 Temperature Data Loggers

Code	Description	Offer Price, €	Offer Price, £
F151132	EBI 300 multi-use USB PDF data logger	58.00	48.30
F151133	EBI 300 TH multi-use USB PDF data logger with external humidity and temperature probe	110.00	92.00
F151134	EBI 300 TE multi-use USB PDF data logger with external temperature probe	107.00	89.00
F151135	EBI 310 DI multi-use USB PDF data logger for dry ice measurements	310.00	258.00
F151136	Wall mount for EBI 300/310	11.00	9.10

30% OFF

## Corning® LSE™ Benchtop Incubated Shaker with Platform

Each unit includes a software package, which provides the option of saving data to an external computer or monitoring RPM and temperature throughout runs. The lid has a low pivot point which provides a space-saving size sure to fit on the lab bench and under shelves. The maximum capacity is 16 x 125mL/ 9 x 250mL/ 5 x 500mL/ 4 x 1000mL.

- Outstanding temperature uniformity
- Large viewing area for undisturbed monitoring of samples
- Multiple shelving options
- Precision control shaking mechanism
- PT100 sensor
- 1min to 99hr timer

Over  
**30%  
OFF**



Code	Speed Range, RPM	Orbit, mm	Temp Range, °C	Dims, w x d x h, mm	Offer Price, €	Offer Price, £
F151062	20 - 300	19	Ambient +5 to 80	370 x 530 x 400	2431.00	2026.00

## Corning® LSE™ Incubated Shakers

This cabinet-style incubator has a compact footprint and can also be stacked to maximize space efficiency. The built in orbital shaker accepts a large assortment of platforms and clamps that can accommodate flasks, Petri dishes, and test tube racks.

- Outstanding temperature uniformity
- Large viewing area for undisturbed monitoring of samples
- Multiple shelving options
- Precision control shaking mechanism
- Speed range: 20 to 300RPM
- Temperature range: ambient +5 to 80°C

Over  
**30%  
OFF**



Code	Capacity, L	Offer Price, €	Offer Price, £
F151064	49	3340.00	2783.00
F151065	71	3679.00	3066.00

## OHAUS Frontier™ FC5513 Microcentrifuge

2  
YEARS



The FC5513 is a high-speed benchtop microtitre centrifuge capable of generating 17317 x g, with four optional rotors designed for a range of essential lab applications. Engineered with convenient operation in mind, the FC5513 features a uniquely designed splash-proof front panel with modern touch-wheel control on an intuitive interface.

- Select from a variety of rotors designed for a range of applications
- Offers standard 24 x 1.5/2mL microtube rotors with a biocontainment option
- Can also support spin columns and haematocrit capillary tubes when used with additional rotor options
- Compact design saves valuable benchtop space



Code	Description	Capacity	Offer Price, €	Offer Price, £
F16118	FC5513	—	1026.00	855.00
F16120	FC5513 with rotor	24 x 1.5/2.0mL	1108.00	923.00

### Rotors

Code	Description	Offer Price, €	Offer Price, £
F16122	Angle rotor 24 x 1.5/2.0mL V2	128.00	107.00
F16124	Angle rotor 24 x 1.5/2.0mL V2 sealable	181.00	151.00
F16126	Angle rotor 18 x 2.0mL SC	154.00	128.00
F16128	Haematocrit rotor 24 x capillaries V2	266.00	222.00



# Benchmark MC-12™ High Speed Centrifuge

2  
YEARS

Benchmark  
Scientific

Benchmark's MC-12™ is the first and only compact microcentrifuge capable of achieving centrifugal speeds up to the critical threshold of 16,000 × g, often held as the standard for many molecular biology/DNA protocols.

- 12 tube capacity
- Less than 9 in. wide
- Quick deceleration
- Whisper quiet operation

25%  
OFF



Code	Max Speed, RPM	Max Speed, x g	Dims, w x d x h, mm	Weight, kg	Offer Price, €	Offer Price, £
F151252	15500	16100	220 x 270 x 150	4.8	1187.00	989.00

# Benchmark MC-24™ Touch High Speed Microcentrifuge with COMBI-Rotor™

2  
YEARS

Benchmark  
Scientific

Benchmark's MC-24™ Touch is the first microcentrifuge in its class to feature touch screen control. It also offers high speed and a unique COMBI-Rotor™ that accepts both standard microtubes (1.5/2.0mL) and PCR tubes/strips (0.2mL) without additional adapters.

- Full colour touch screen shows actual speed along with set and remaining time
- Up to 9 speed/time profiles can be stored in memory
- mySpin™ 1 button program recall
- COMBI-Rotor™ accepts tubes and strips
- Unique air-flow system, keeps samples cool
- Optional rotor/adapters available

35%  
OFF



Code	Max Speed, RPM	Max Speed, x g	Dims, w x d x h, mm	Weight, kg	Offer Price, €	Offer Price, £
F151253	13500	16800	230 x 305 x 197	6.4	1699.00	1416.00

# Axygen® Axyspin Plate Spinner

2  
YEARS

Axygen

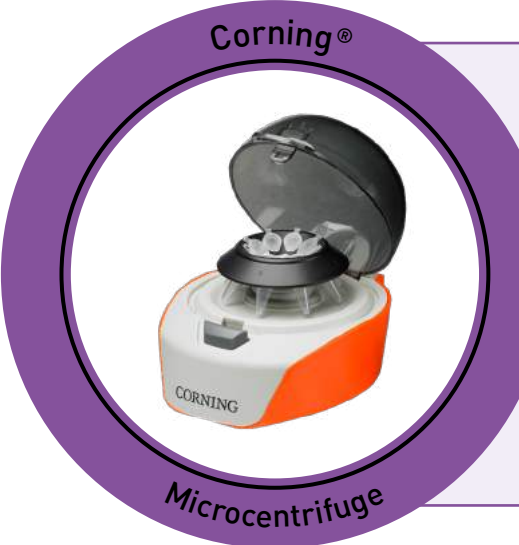
The first centrifuge designed specifically for quick and easy centrifugation of samples in PCR plates or microplates.

- Top loading design
- Exceptionally small footprint
- Starts and stops in seconds
- Use before and after thermal cycling to improve PCR yield
- Quickly spin down droplets and condensation
- Accepts skirted, non-skirted and all standard PCR plates
- Capacity for two standard plates

44%  
OFF



Code	Max Speed, RPM	Max Speed, x g	Dims, w x d x h, mm	Offer Price, €	Offer Price, £
F151060	2500	500	190 x 210 x 183	402.00	335.00



# Corning® LSE™ Mini Microcentrifuge

Includes an 8-place 1.5/2.0mL rotor with adapters for 0.5/0.4mL and 0.2mL tubes and a 4-place rotor for PCR strip tubes. Fixed speed: 6000RPM / 2000 × g.

Code	Dims, w x d x h, mm	Offer Price, €	Offer Price, £
F151061	148 x 174 x 122	167.00	139.00

29%  
OFF

Accuris SmartWasher™ 96  
Microplate Washer without Manifold

2  
YEARS

Benchmark  
Scientific

Full plates, partial plates, and strips with U, V, C, or flat bottoms are accepted by this fully automated washer. All parameters, including dispense volume, suction time, soak and shake cycles, and shaking speed are easily programmed using the large 4.3" LCD display and keypad. The washer comes equipped with 2 wash bottles, 1 rinse bottle and a waste bottle.

- Precision control of aspiration needle position accurate to 0.1mm
- Minimal residual liquid, ≤1µL/well
- Auto rinse function eliminates cross contamination
- Up to 100 wash protocols can be customised and stored
- Liquid level sensors in wash and waste bottles
- Wash protocols can be transferred via flash drive
- 8 or 12 channel manifold - sold separately - **see Analab website**

20%  
OFF



Code	Offer Price, €	Offer Price, £
F151254	4123.00	3436.00

Accuris SmartReader™ 96  
Microplate Absorbance Reader

Benchmark  
Scientific

The Accuris SmartReader™ 96 is a convenient stand alone reader with a 7 inch touch screen, intuitive software and graphical interface. Offers precise temperature control for incubation of plates during processing. Temperature can be maintained at 5°C above ambient to 50°C. Comes complete with 4 popular filters: 405, 450, 492 and 630nm, with 26 additional filters available separately.

- 8 channel vertical optical path, with zero dispersion
- Integrated, multi-speed plate shaker
- USB port allows quick and easy saving of data files to a USB drive
- Data port can be used for connecting a computer or basic printer

20%  
OFF



Code	Absorbance Range, A	Wavelength Range, nm	Offer Price, €	Offer Price, £
F16194	0.0 to 4.000	340 to 750	5520.00	4600.00

Tecan Spark™ Microplate  
Reader Bundles

1  
YEAR

TECAN.

Spark provides unparalleled wavelength accuracy, with a dedicated high speed monochromator for absorbance measurements. Together with a cuvette port and the patented NanoQuant Plate™, it provides an all-in-one solution for ELISAs, low volume DNA/protein quantification and fast spectral scanning. With its unique Fusion Optics for fluorescence, allowing any combination of filters or monochromators on both the excitation and emission sides for every measurement; users no longer have to choose between sensitivity or flexibility for their assays. A platform that allows researchers to freely configure the reader to their current needs, and is fully upgradable to access other techniques and features in the future.

20% OFF  
+ FREE Large  
Humidity Cassette  
and Automated  
Lid-Lifter



Code	Description	Offer Price, €	Offer Price, £
F16242	Spark™ with absorbance, fluorescence top, bottom monochromators and standard luminescence	31159.00	25966.00
F16250	Spark™ with absorbance, fluorescence top, bottom monochromators, 4 X brightfield imaging, confluence, cell counting and cell viability	35363.00	29469.00

Face Visor  
with Headband

60%  
OFF

Face Visor  
with Headband

Approved by the MHRA on device compliance. CE marked to Regulation & Technical Specification: PPE for Healthcare Professionals 2020/403 for Eye Protection.

Code	Offer Price, €	Offer Price, £
COV1015	26.00	22.00



SLS Select Deep Well Storage Plates



SLS Select deep well storage plates are high performance plates produced in cleanrooms that are certified for medical device assembly. They are manufactured in pure virgin medical grade polypropylene (PP) with class leading low levels of extractable elements.

- ANSI-SBS footprint
- Tested for low extractables
- Alpha-numeric reference grid
- Suitable for automated or manual applications
- For use in sample storage at 86°C to DNA denaturation at 100°C
- Autoclavable
- No inner edges to allow better collection of magnetic beads
- Manufactured under DNase/RNase free environment
- Coloured versions available



62% OFF

Code	Shape	No. of Wells	Well Volume, mL	Bottom	Colour	Pack	Offer Price, €	Offer Price, £
F16418	Round	96	1	U	Natural	50	91.00	75.70
F16420	Round	96	1	U	Black	50	84.00	70.10
F16422	Round	96	1	U	Natural	50	91.00	75.70
F16424	Round	96	1.2	U	Natural	50	94.00	78.50
F16426	Round	96	1.2	U	Natural	50	94.00	78.50
F16428	Round	96	2	U	Natural	50	98.00	81.80
F16430	Square	96	2	V	Natural	50	77.00	64.30
F16432	Square	96	2	V	Black	50	85.00	70.70
F16434	Square	96	2.2	V	Natural	50	77.00	64.30
F16436	Square	96	2.2	U	Natural	50	126.00	105.00
F16438	Square	384	0.3	V	Natural	48	322.00	268.00



SLS Select Hand Sanitiser

70% alcohol gel, kills 99.9% of bacteria.

Code	Pack	List Price, €	List Price, £
COV1200	100mL	0.77	0.59
COV12000	10 x 100mL	7.48	5.75

SPECIAL PRICE

Blue-Ray Biotech Gradient TurboCycler 2 with 96-Well Sample Block



- Flexible ramp rate control from 0.1 to 5.5°C/s
- Fully adjustable lid temperature can be set between 35 and 120°C
- Gradient optimisation range from 1 to 30°C
- Sensitive 7" capacitive touchscreen enables easy operation even with laboratory gloves
- WiFi function allows monitoring of your PCR status remotely anytime on your mobile device via the free TurboApp
- Sample block: 96 well compatible with regular profile or low profile 0.2mL PCR tube, strip, non-skirted, semi-skirted and full-skirted 96-well plate



16% OFF

Code	Dims, w x d x h, mm	Offer Price, €	Offer Price, £
F16286	245 x 415 x 225	3162.00	2635.00

Blue-Ray Biotech Gradient TurboCycler Lite with 96-Well Sample Block



- Sensitive capacity touch keypad and an intuitive graphical interface
- The thermal gradient function allows fast PCR optimization for new experiments
- The ramp rate can be precisely controlled down to 0.1°C/s to meet the need for the CRISPR/Cas related assays
- Fully adjustable lid temperature can be set between 35 and 120°C
- Easy disinfection dust and aerosol proof keypad
- Auto restart - power failure recovery
- Sample block: fixed 96-well, compatible with regular profile or low profile 0.2mL PCR tube, strip, non-skirted, semi-skirted and full-skirted 96-well plate

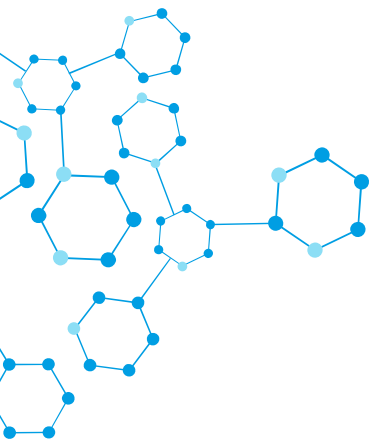
17% OFF



Code	Dims, w x d x h, mm	Offer Price, €	Offer Price, £
F16288	245 x 415 x 225	2370.00	1975.00



Meridian Bioscience  
PCR Reagents



Up to  
**23%  
OFF**



bioline  
meridian

VELOCITY DNA Polymerase

VELOCITY is a fast thermostable enzyme possessing 5´-3´ DNA polymerase and 3´-5´ proofreading exonuclease activities. Provides high-fidelity with an error-rate of 4.4 x 10<sup>-7</sup> combined with a high speed DNA synthesis as fast as 15s/kb for templates of up to 5kb and 30s/kb for templates longer than 5kb.

Code	Pack	Offer Price, €	Offer Price, €
F16274	250 units	163.00	136.00
F16276	500 units	300.00	250.00

ACCUZYME™ DNA Polymerase

ACCUZYME™ is a thermostable enzyme possessing 5´-3´ DNA polymerase and 3´-5´ proofreading exonuclease activities. Provides high fidelity with an error-rate of 3.0 x 10<sup>-6</sup> to give blunt-ended amplicons of up to 5Kb in length.

Code	Description	Pack	Offer Price, €	Offer Price, €
F16278	ACCUZYME™ DNA polymerase	500 units	228.00	190.00
F16280	ACCUZYME™ ready-to-go 2x reaction mix	500 reactions	451.00	376.00

SimpliFi HS Mix

SimpliFi HS Mix is a convenient ready-to-go 2x reaction mix combining the latest advances in buffer chemistry and PCR enhancers and stabilizers, together with an aptamer-mediated hot-start polymerase, dNTPs and MgCl<sub>2</sub>. It has been designed for highly reproducible, accurate assay results in the presence of inhibitors.

Code	Pack	Offer Price, €	Offer Price, €
F16282	100 reactions	199.00	166.00
F16284	500 reactions	689.00	574.00

SLS Flowgen MultiSUB Choice Tanks

2  
YEARS

SLS FLOWGEN

With two wide tray options (150 x 100 and 150 x 150mm) and multichannel pipette compatible combs for speed loading, MultiSUB Choice offers a wide degree of flexibility.

Ideal for restriction fragment analysis, sample prep or checking of high sample numbers

- Run up to 210 samples
- Low buffer volumes
- Multichannel pipette compatible combs for speed loading
- Supplied with 2 x 20 sample combs, loading guides and dams

Over  
**30%  
OFF**



Code	Description	Gel Dims, w x l, mm	Max Capacity	Offer Price, €	Offer Price, €
MSCHOICE10	MultiSUB Choice 10	150 x 100	140 samples	294.00	245.00
MSCHOICE15	MultiSUB Choice 15	150 x 150	210 samples	294.00	245.00

SLS Flowgen Mini Rapide Tank

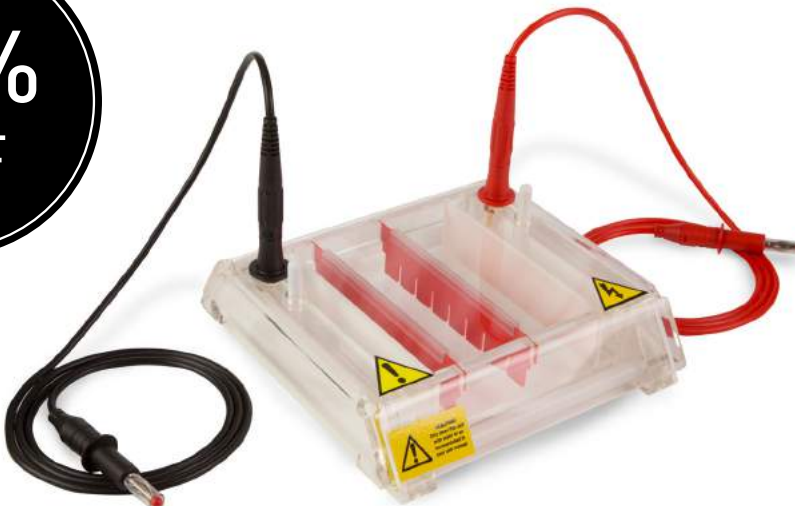
2  
YEARS

SLS FLOWGEN

An ultra-compact self-contained system for routine molecular biology procedures and quick checks of samples. Buffer and gel volumes kept to a minimum to maximise current and separation speed.

- A convenient self contained solution for routine agarose gel electrophoresis
- Ultra compact
- Low buffer volumes
- Multichannel pipette compatible combs for speed loading

**35%  
OFF**



Code	Dims, w x d x h, mm	Supplied with	Offer Price, €	Offer Price, €
FMMS10	150 x 150 x 40	2 x 8 sample combs 1.5mm, casting dams	235.00	196.00

SLS Flowgen PowerPro 300 Power Supply

2 YEARS



The PowerPro 300 is the ideal power supply for routine horizontal electrophoresis using multiSUB Mini, Midi and Choice and vertical electrophoresis using omniPAGE Mini.

- With built in pre-set protocols.
- 2.4" LCD screen
- Browse preset and saved protocols, store up to 30 programmes with up to 6 steps
- Can be operated at constant voltage, constant current or constant power and
- Pause/resume key allows any run to be temporarily halted and restarted from the same position

20% OFF



Code	Max Voltage, V	Max Current, mA	Max Power, W	Output Pairs	Dims, w x d x h, mm	Offer Price, €	Offer Price, £
ELE2600	300	400	60	2	215 x 335 x 104	418.00	348.00

SLS Flowgen nanoPAC-300P Power Supply

2 YEARS



- Ideal for use with DNA/RNA (Horizontal) and protein (vertical) electrophoresis systems
- Includes a simple two step feature which allows users to set a programmable change in voltage/current/time during the run
- Enhanced in-built safety features
- A conspicuous 3-digit LED
- Alarm function
- Wipe-clean polycarbonate housing

25% OFF



Code	Max Voltage, V	Max Current, mA	Max Power, W	Output Pairs	Dims, w x d x h, mm	Offer Price, €	Offer Price, £
NANOPAC-300	300	400	60	2	140 x 191 x 84	342.00	285.00

Syngene NuGenius Gel Documentation System

3 YEARS



NuGenius is a compact gel documentation workstation, which uses a choice of UV, blue or white lighting options giving the flexibility to image fluorescent and visibly stained gels at the workstation. A groundbreaking 5 million pixel CCD camera gives superb pixel resolution and unrivalled sensitivity, and offers a maximum viewing area of 20 x 24cm which is very large for such a small, compact unit.

- Compact workstation - plenty of bench space for your research
- Complete with built-in processor, touch screen and NuGenius software
- Easily capture and edit images on screen without a computer
- Motor driven zoom lens - automatic set up for easy image capture
- 5m pixel camera - resolves close bands and detects nanogram amounts

Save over €1800

FREE transilluminator (20 x 24cm, 302nm), visible light converter, UV to blue light converter and NuGenius network kit



Code	Offer Price, €	Offer Price, £
F151660	6720.00	5600.00

Benchmark Pulse 150™ Ultrasonic Homogenizer

2 YEARS



The Pulse 150 Ultrasonic Homogenizer uses cavitation and ultrasonic waves to break cells in suspension, shear DNA and prepare samples for ChIP assays. The unit processes samples from 0.1mL to 150mL (with the appropriate horn).

Included: controller, transducer, temperature probe, 6mm diameter titanium alloy horn, wrenches and a soundproof box with sample platform. The 6mm horn is appropriate for volumes from 10mL to 100mL. Optional horns are available for other volumes.

- 4.3 inch colour touch screen
- Pulsed operation and power level is easily programmed
- Twenty programs can be stored in memory
- Alarms alert the user to over temperature, over/no load and expiration of time

30% OFF



Code	Offer Price, €	Offer Price, £
F151248	2435.00	2029.00



# Corning® Automatic Cell Counter

Corning® Cell Counter can perform a single cell count in less than three seconds. It can utilise the CytoSMART™ cloud app to process the images in the Microsoft Azure Cloud Computing Platform. This means that it can analyse the images faster than any existing on board processor. The cell counter uses a sophisticated Deep Neural Network for cell detection.

- State-of-the-art image analysis software allows for optimal accuracy
- When Trypan Blue is added the system can also detect cell viability
- The cell counter can detect clusters of cells, which leads to accurate cell counts of highly concentrated samples (up to 1 x 10<sup>7</sup> cells/mL)
- Works with common reusable glass hemocytometer, no consumables required
- Instantly generates a report containing the counted cell concentrations and viability with the image of the counted sample and the counted cells (live and dead) clearly indicated
- 5MP CMOS camera



18% OFF

Code	Measurement Range, µm	Sample Volume, µL	Field of View	Magnification	Image Resolution	Offer Price, €	Offer Price, €
F10100	4 to 70	10	2.0 x 1.5	X200	2048 x 1536	3246.00	2705.00



## Corning® RPMI 500mL

Code	Description	Offer Price, €	Offer Price, €
F16150	1640 with L-glutamine	27.00	22.40
F16152	1640 with L-glutamine and 25mM HEPES	28.00	23.70
F16156	1640 without L-glutamine	25.00	21.10

Over 50% OFF



## Lonza Speciality Media

Code	Description	Pack	Offer Price, €	Offer Price, €
F16266	Insect XPRESS™ protein-free medium with L-glutamine	1L	34.00	28.50
F16268	ProCHO™ 5 protein-free CHO medium NAO	1L	30.00	24.60
F16270	X-VIVO™ 15 serum-free hematopoietic cell medium	500mL	71.00	59.50

Over 40% OFF

## Accuris QuadCount™ Automated Cell Counter

The Accuris QuadCount™ improves on the simple technique of brightfield microscopy by utilising an LED light source, precision optics and a high resolution CMOS detector. A finely tuned, motorized XYZ positioning stage provides for extra fine focusing and ability to capture multiple images. The advanced software eliminates human bias in dead/live determinations, reduces counting errors, saves time, and improves efficiency. The QuadCount utilises a unique 4-chambered disposable QuadSlide™, four samples can be processed in one slide.

3 count modes available to analyse different sample volumes:

- Quick mode: 0.15µL / 20 seconds (1 image frame)
- Normal mode: 0.9µL / 30 seconds (6 image frames)
- Precise mode: 3.6µL/ 100 seconds (24 image frames)

Code	Offer Price, €	Offer Price, €
F16192	3547.00	2956.00



20% OFF



# Clicksmart BladeFLASK EVO Scalpel Blade Removal System

Swann-Morton LIMITED

- Safely removes and contains 100 scalpel blades
  - Compatible with all BP scalpel blades including and up to PM60A, PM60B, PM70
  - Safe and easy to use with a single handed operation
  - Compliant with UK Health and Safety (Sharp Instruments in Healthcare) Regulations 2013
  - Is a puncture proof sharps container
  - Can be wall, bench or trolley mounted using the Clicksmart Universal Mounting Bracket
- Compatible with all BP handles including 3, 4, 5, 7, 9, Lawton, Bulbous (PM6, PM8), Hexagonal, Circular and Barron Handles

NEW

40% OFF  
+ FREE Clicksmart  
Universal Mounting  
Bracket



Code	Offer Price, €	Offer Price, £
F16262	28.00	23.16

Over  
50%  
OFF

## Corning® DMEM 500mL

Supplied in packs of 6

Code	Description	Offer Price, €	Offer Price, £
F16132	4.5g/L glucose with L-glutamine and sodium pyruvate	24.00	19.75
F16134	1g/L glucose with L-glutamine and sodium pyruvate	27.00	22.50
F16136	4.5g/L glucose with L-glutamine without sodium pyruvate	27.00	22.50
F16138	4.5g/L glucose with sodium pyruvate without L-glutamine	25.00	21.10
F16140	4.5g/L glucose without L-glutamine and sodium pyruvate	28.00	23.70

Corning® DMEM



6 packs of 500mL

# Jenway 7315 Single Beam Scanning UV/Visible Spectrophotometer

3  
YEARS

Jenway®

Features measurement modes for absorbance, % transmittance, concentration, spectrum scanning, kinetics and quantitation. Easy access USB port on the front of the unit enables results to be stored directly to a USB memory stick for easy transfer of data. Can also store up to 240 methods which can be copied from one unit to another using the USB capability. Enhanced security features enabling the settings and methods to be locked preventing unauthorised changes.

- Icon driven software
- Autologging capabilities
- Press to read xenon lamp
- Fitted with 10x10mm cuvette holder, supplied with 100 disposable cuvettes, instruction manual, universal power supply, USB memory stick, PC software on CD ROM and interface cable

25%  
OFF



Code	Wavelength Range, nm	Wavelength Accuracy, nm	Bandwidth, nm	Dims, w x d x h, mm	Offer Price, €	Offer Price, £
F16020	198 - 1000	±2	5	275 x 400 x 220	3304.00	2753.00

# Jenway Genova Bio Life Science Spectrophotometer

2  
YEARS

Jenway®

This spectrophotometer measures across a UV/visible wavelength range of 198 to 800nm, with a narrow spectral bandwidth of 3nm.

- Pre-programmed for DNA, RNA and protein analysis
- Compatible with ultra-micro, semi-micro, micro and macro cuvettes
- Scanning diode array technology
- Colour touchscreen navigation
- Small footprint and lightweight (<3kg)
- Fast scan speed
- Multiple USB ports for data storage and printer connectivity

25%  
OFF



Code	Wavelength Range, nm	Wavelength Accuracy, nm	Bandwidth, nm	Dims, w x d x h, mm	Offer Price, €	Offer Price, £
F151001	198 - 800	±2	3	212 x 422 x 120	2788.00	2323.00

Grant LT Ecocool Energy Efficient Refrigerated Heating Circulating Baths



Innovative, eco-friendly, refrigerated heated circulating baths offering significant running cost savings whilst delivering powerful cooling. Consisting of two models, the LT ecocool range is supplied assembled as ready to use kits, complete with accessory hosing, clips and connectors as standard. Thermostat and chiller work in harmony, neither will operate alone, eliminating any danger of overheating or freezing.

- 3 temperature presets
- Working area (d x w) mm 118 x 154
- No-spill valved front drain
- Intuitive user interface
- Eco mode optimises the cooling control needed enabling rapid cool down
- Temperature range of hosing supplied: -40°C to 100°C (can be cut to length as required)
- Supplied tubing 2 x 1.5m ID 9mm Ø

23% OFF



Code	Model	Capacity, L	Max Flow Rate, L/min	Max Pump Pressure, mbar	Display	Temp Range, °C	Offer Price, €	Offer Price, £
F16196	LT ecocool 100	5	17	250	4 digit LED	-20 to +100	2653.00	2211.00
F16200	LT ecocool 150	6	14 – 22	530	Full colour QVGA TFT	-25 to +150	2981.00	2484.00



AppliChem Water Bath and Incubator Disinfectant

Prevents contamination and growth of fungi, moulds, bacteria, mycoplasma and viruses.

UP TO 30% OFF

Code	Description	Pack	Offer Price, €	Offer Price, £
F16290	Aquabator-Clean 100X for water baths	250mL	34.00	28.00
F16296	Incuwater-Clean 100X for CO <sub>2</sub> incubator water baths	100mL	34.00	28.00
F16292	Incubator-Clean spray bottle for incubators	500mL	71.00	59.50
F16294	Incubator-Clean bulk pack for incubators	5L	505.00	421.00

Getinge Lancer ULTIMA 910LX Freestanding Labware Washer Dryer Package



The Getinge Lancer ULTIMA 910LX freestanding washer offers a range of labware loading options using baskets, injector racks or combination racks for the best high capacity processing of multiple labware types in the industry. As standard all units are delivered to point of use, installed by qualified engineers and commissioned to GETINGE Lancer standards.

- Touchscreen controller 3.5" colour stores up to 40 programs
- HEPA filtered direct injection drying
- Low pressure valve and pump kit for trouble free DI water connection
- Steam condenser for collapsing exhaust vapor
- 2 chemical dosing pumps to dispense detergent and acid rinse
- 2 chemical level sensors for notification when chemicals are low
- 2 wash levels and runner positions

20% OFF



Package includes: Ultima 910LX Laboratory Glasswasher, racks (PST basic flat mesh basket and 36 IXLC 36 injectors long and short Ø 6mm), 3 years warranty and service cover, plus 3 x 10L bottles of detergent and 3 x 10L bottles of rinseaid.

Code	Chamber Capacity, L	Max Temp, °C	Dims, w x d x h, mm	Offer Price, €	Offer Price, £
F16308	160	95	609 x 752 x 1483	22794.00	18995.00



# Thermo Scientific™ Heratherm Microbiological Incubators



Thermo Scientific™ Heratherm general protocol microbiological incubator line is designed with sample safety in mind, for applications in pharmaceutical, medical, food and research laboratories.

- Gravity convection provides gentle air flow and minimal drying out
- Temperature range from ambient +5°C to 75°C
- Temperature uniformity of ±0.6°C (measured at 37°C)
- Temperature stability of ±0.2°C (measured at 37°C)
- Corrosion-resistant stainless-steel chamber (AISI 430)
- Intuitive user interface for setting temperature
- Large, easy to read vacuum fluorescent display
- Internal glass door allows sample viewing without impacting temperature

Code	Capacity, L	Offer Price, €	Offer Price, £
F16216	60	1217.00	1014.00
F16220	100	1716.00	1430.00
F16224	180	2389.00	1991.00



## SLS Lab Pro Laboratory Incubator



Chamber manufactured from bright polish stainless steel lagged with high efficiency thermal insulation. Digital temperature control up to 80°C with program feature run back timer. Over temperature auto set and Class 1 over temperature protection. Single insulated door, lockable with 2 point door engagement for an even seal.

- Door chime when left open
- Inner clear polycarbonate door
- Anti-bacterial paint finish
- Temperature range ambient +5°C to 80°C
- PID digital, LED display showing actual or set temperature, resolution 0.1°C
- Gravity natural convection
- Temperature sensor fail alarm with error reporting
- Shelf runners adjustable in 20mm steps vertically

Code	Capacity, L	Supplied with	Shelf Positions	Offer Price, €	Offer Price, £
F16476	60	2 x stainless steel shelves	5	1375.00	1146.00
F16478	110	2 x stainless steel shelves	8	1759.00	1466.00
F16480	250	3 x stainless steel shelves	10	2719.00	2266.00



# Thermo Scientific™ Heratherm Ovens



Thermo Scientific™ Heratherm™ general protocol ovens are designed for daily laboratory work. Featuring temperature uniformity and low energy consumption, with unique door design and highly efficient, insulation-reducing heat emission.

- Gravity convection provides gentle air flow and minimal drying out
- Operating temperatures from 50°C to 250°C
- Automatic over-temperature alarm system
- Built in timer
- Corrosion-resistant stainless-steel chambers with rounded corners
- Large, easy to read vacuum fluorescent display
- Microprocessor-controlled touch button operation
- Doors can be opened over 180°C

Code	Capacity, L	Offer Price, €	Offer Price, £
F16226	60	1048.00	873.00
F16228	100	1544.00	1287.00
F16238	180	2105.00	1754.00



## SLS Lab Pro Laboratory Ovens



Chamber manufactured from bright polish stainless steel lagged with high efficiency thermal insulation. Digital temperature control up to 250°C with program feature run back timer. Over temperature auto set and over temperature protection. Single insulated door, lockable with 2 point door engagement for an even seal.

- Door chime when left open
- Anti-bacterial paint finish
- Temp range ambient +5°C to 250°C
- PID digital LED display showing actual or set temperature, resolution 0.1°C
- Fan convection from 0% variable to 100% for forced air circulation
- Temperature sensor fail alarm with error reporting
- Shelf runners adjustable in 20mm steps vertically

Code	Capacity, L	Supplied with	Shelf Positions	Offer Price, €	Offer Price, £
F16482	60	2 x stainless steel shelves	5	1519.00	1266.00
F16484	110	2 x stainless steel shelves	8	1920.00	1600.00
F16486	250	3 x stainless steel shelves	10	2400.00	2000.00





Benchmark UV-Clave  
UltraViolet Chamber

2  
YEARS



Short-wave UV light is an effective method for the disinfection of surface DNA, RNA and microorganisms. Highly focused UV irradiation is used to disinfect tools, vessels and other research items, eliminating up to 99% of surface contamination. Includes powerful UV-C bulbs on both the top and bottom of the chamber with a shelf that allows for >90% of UV-C light transmission and highly reflective chamber walls, the result is true 360° exposure.

- Integrated auto shut-off prevents illumination when the door is open
- Improves quality of PCR research by reducing potential contaminants
- Adjustable cycle time
- Chamber comes with 2 wire and 1 transparent shelf

30%  
OFF



Code	Offer Price, €	Offer Price, €
F151251	394.00	328.00



Xylem Ebro EBI 20  
Temperature Logger Sets

Code	Description	Offer Price, €	Offer Price, €
F151139	TF temperature data logger with external sensor (food-logger)	176.00	147.00
F151146	T1 temperature data logger with internal sensor	116.00	97.00
F151147	TE1 temperature data logger with external penetration probe	158.00	132.00
F151148	TH1 humidity/temperature data logger with internal sensor	145.00	121.00

30%  
OFF

Astell Swiftlock Autoclaves Front Loading

1  
YEAR



The Astell Swiftlock range is fitted with heaters in the base of the chamber and is ideal for sterilising liquids (media), discard, glassware and laboratory instruments.

- A fully programmable touch screen controller
- An electropolished stainless steel chamber
- Holdwarm and delayed start features
- Over temperature protection
- Cooling lock
- Safety valve test
- Emergency stop button
- External pressure gauge
- Validation port and drain valve

20% OFF  
+ FREE Load Sensed  
Process Timing  
Probe and External  
Cooling Fan



Code	Capacity, L	Chamber Dims, Ø x d, mm	Ext Dims, w x d x h, mm	Offer Price, €	Offer Price, €
F16202	120	454 x 740	685 x 1320 x 1100	12922.00	10768.00
F16208	153	454 x 945	685 x 1320 x 1310	15038.00	12532.00
F16210	247	600 x 876	900 x 1405 x 1370	16733.00	13944.00
F16212	290	600 x 1024	900 x 1405 x 1370	18658.00	15548.00
F16214	344	600 x 1217	900 x 1505 x 1370	19718.00	16432.00

ECO-FRIENDLY SOLUTIONS FOR STERILISING LIQUID WASTE



BioSink & Autoclave Combo

This unit features a top-loading autoclave and an Astell BioSink. Any wastewater washed into the self-contained washbasin of the BioSink is sterilised using heat before it is dispatch to the drain.  
Contact Astell for more information about the standard or customised BioSink & Autoclave Combo unit.



Thermal Batch EDS

This Effluent Decontamination System (EDS) captures all material that is washed down a facility's drains, which it then sterilizes with heat before dispatching to the sewer.  
With a configurable design and structure, these units can be built to handle volumes of effluent from sites of any size.

Labogene CoolSafe Superior Touch 95-80 Freeze Dryer Bundle

- Touchscreen controller and display of temperature, pressure and time during operation
- Large capacity, seamless stainless steel condenser with external cooling coils and electric de-icing as standard
- Front-loading for ease of access, loading and supervision
- Fully automatic control of pre-freeze in 5 steps. - and primary and secondary drying in 10 steps. Controlling shelf temperature from -80°C to + 50°C for correct ice crystal formation and freeze drying
- Condenser ice capacity of max. 10kg/24 hours
- The chamber can accommodate from 2 to 8 electrically heated shelves with trays, giving a total area ranging from 0.3m² to 1.2m²

Code	Offer Price, €	Offer Price, €
F151707	35618.00	29682.00

Promotional Bundle complete with bulk rack including 2 x heated shelves and 105L/min vacuum pump RZ 6

Over 35% OFF



Labogene Scanvac CoolSafe Touch 95-15 Freeze Dryer Bundle

- Freeze-drying with programming and storage of protocols for full research and method development
- Touchscreen controller and display of temperature, pressure and time during operation
- Large capacity, seamless stainless steel condenser with external cooling coils, heavily insulated to conserve energy
- Condenser ice capacity of max. 6kg/24 hours
- 15 litre condenser capacity and -95°C temperature

Promotional Bundle complete with acrylic chamber including 3 x stainless steel shelves, 4 x trays and 30L/min vacuum pump RZ 2.5

45% OFF



Code	Offer Price, €	Offer Price, €
F16002	13120.00	10933.00

SCANVAC

ClearLine® CryoGen® Tube Freezer Boxes

These durable polycarbonate cryogenic storage boxes are designed to be used at temperatures between -196 and +121°C and are autoclavable at 120°C for 20 minutes.

- Break-resistant, durable polycarbonate
- Writing area on the cover and on the bottom for an easy identification
- Numbered lid for an easy tubes positioning

Up to 38% OFF

Code	Bottom Colour	Tube Capacity	Pack	Offer Price, €	Offer Price, €
F16380	Blue	25 x 1-2mL	8	22.00	18.00
F16382	Red	25 x 1-2mL	8	21.00	17.10
F16384	Green	25 x 1-2mL	8	21.00	17.10
F16386	Yellow	25 x 1-2mL	8	21.00	17.10
F14420	Blue	81 x 1-2mL	5	28.00	23.10
F14422	Red	81 x 1-2mL	5	26.00	21.70
F14424	Green	81 x 1-2mL	5	25.00	20.70
F14426	Yellow	81 x 1-2mL	5	26.00	21.70
F16388	Blue	81 x 3-5mL	4	25.00	20.70
F16390	Red	81 x 3-5mL	4	22.00	18.10
F16392	Green	81 x 3-5mL	4	21.00	17.20
F16394	Yellow	81 x 3-5mL	4	22.00	18.10
F14428	White	100 x 1-2mL	5	21.00	17.20
F14430	Blue	100 x 1-2mL	5	27.00	22.70
F14432	Red	100 x 1-2mL	5	26.00	21.50
F14434	Green	100 x 1-2mL	5	26.00	21.50
F14436	Yellow	100 x 1-2mL	5	26.00	21.50



Xylem

Xylem Ebro RM 100 Room Climate Monitor

The room climate monitor RM 100 measures the air temperature, humidity and CO<sub>2</sub> value.

Code	Dims, w x d x h, mm	Display	Offer Price, €	Offer Price, €
F151131	137 x 51 x 99	LCD	108.00	90.00

35% OFF



Room Climate Monitor



Ecodyst Disruptive Evaporation Technology



Set new sustainable standards by improving energy efficiency and rates of evaporation – saving money, time and your carbon footprint.

Ecodyst Hydrogen® Rotary Evaporator

The high-performance all-in-one rotary evaporator. Revolutionary self-cooling condenser. Efficient. Smart.

Ecodyst EcoChyll X1

A powerful, small footprint, energy-efficient smart self-cooling condenser that upgrades any brand of rotary evaporator.



ecodyst



Proprietary first-in-class highly efficient metallic condensers for rotary evaporators



Direct self-cooling technology that truly eliminates dry ice and antifreeze chillers



Environmentally friendly, energy efficient and sustainable



Code	Description	List Price, €	List Price, £
EVA1210	Hydrogen® 1H rotary evaporator without vacuum pump	23022.00	17709.00
EVA1212	Hydrogen® 1H rotary evaporator with vacuum pump	28534.00	21949.00
EVA1208	EcoChyll X1 standalone condenser with condenser body glassware	11673.00	8979.00

SLS Lab Pro NG1-1 Nitrogen Gas Generator



LABGAS+ NG is the latest range of nitrogen PSA laboratory gas generators from SLS. Utilising the reliable and efficient PSA technique of separating nitrogen and oxygen to produce high quality nitrogen gas at various flows and purities. The generators are controlled using the latest in HMI touch screen technology to display the process in real-time, inlet/outlet pressures, trend graphs and much more.

- Range of flow-rates
- With or without internal oil-free air compressor
- Compact and quiet design
- Purity 99.9995% - 98%
- Auto-run facility
- Energy saving mode
- Outlet flow indicator (% flow)
- Trend graphs into MS excel
- Alarms with help menu
- Audible alarm sounder
- Remote access via internet



Code	Nitrogen Outlet Flowrate, NL/min	Outlet Pressure, psig	Dims, l x w x h, mm	Offer Price, €	Offer Price, £
F16440	1.0	75.0	300 x 320 x 650	4500.00	3750.00

SLS Lab Pro TRITON2 Liquid Nitrogen Generator



TRITON2 and TRITON2+ are the latest 'air-cooled' liquid nitrogen generators from SLS. Utilising the lowest powered cooling system to make TRITON2 the most efficient small 10L/day LN<sub>2</sub> production system available. The liquid nitrogen is stored within a suitable sized vacuum insulated tank and the product can be dispensed using its specially designed front loading flask dispenser.

- Air cooling, no water chiller required
- Internal air compressor
- Nitrogen produced using our own PSA nitrogen generator
- LN<sub>2</sub> at 99% purity
- Nitrogen injection system for pre-cooling of gas prior to liquefaction's
- All cryogenic parts are vacuum insulated
- Colour touch screen control



Code	Liquid Nitrogen Production, L/hr	Tank Volume, L	Dims, w x d x h, mm	Offer Price, €	Offer Price, £
F16442	0.42	20	600 x 600 x 1700	28162.00	23468.00



ANALAB IRELAND PRESENTS

# FOCUS

EXCLUSIVE OFFERS & EXCITING NEW PRODUCTS

See page 17...

**35%  
OFF**



Analab Ireland  
Analab Limited  
Rathdown Close  
Lissue Industrial Estate West  
Lisburn, Co. Antrim  
BT28 2RB

t. (Lisburn) 028 9262 1100

t. (Dublin) 01 4069 464

[www.analab.co.uk](http://www.analab.co.uk) or [www.analab.ie](http://www.analab.ie)

## **OHAUS Adventurer® Precision Balances**

Incorporating all of the applications necessary for routine weighing and measurement activities. With a wide viewing angle colour touchscreen, GLP/GMP compliance capabilities and two USB ports

**AUTUMN EDITION**

**2021**